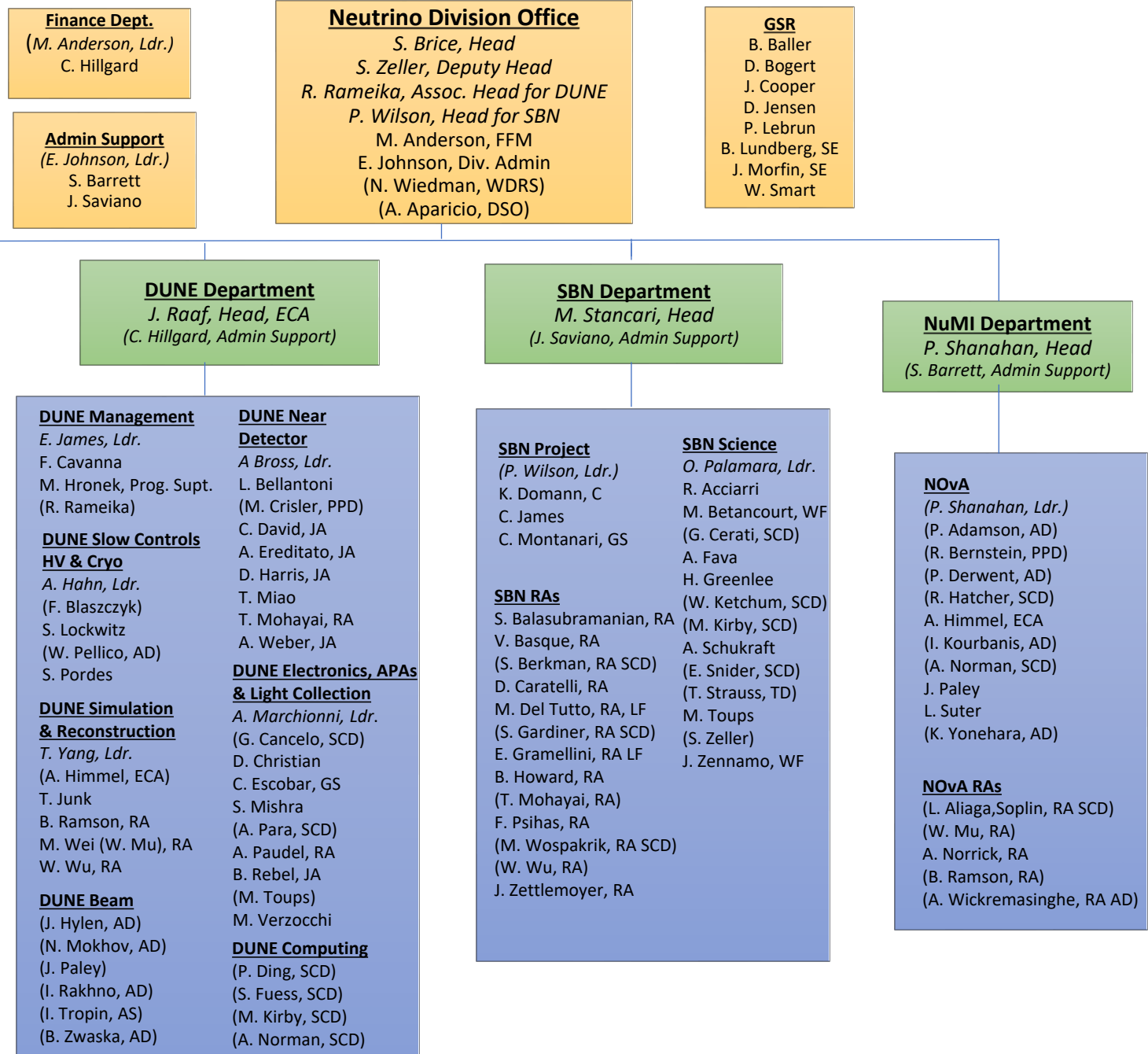


# NEUTRINO DIVISION

Last Updated: August 4, 2021

	Count	Female	Black	Hispanic
Engineer	14	43%	0%	0%
Leadership	6	50%	0%	0%
Mission Supt	7	86%	14%	14%
Postdoc	14	43%	7%	7%
Scientist	34	29%	0%	6%
Technical	12	8%	17%	17%
<b>Total</b>	<b>87</b>	<b>37%</b>	<b>5%</b>	<b>7%</b>



**Finance Dept.**  
(M. Anderson, Ldr.)  
C. Hillgard

**Neutrino Division Office**  
S. Brice, Head  
S. Zeller, Deputy Head  
R. Rameika, Assoc. Head for DUNE  
P. Wilson, Head for SBN  
M. Anderson, FFM  
E. Johnson, Div. Admin  
(N. Wiedman, WDRS)  
(A. Aparicio, DSO)

**GSR**  
B. Baller  
D. Bogert  
J. Cooper  
D. Jensen  
P. Lebrun  
B. Lundberg, SE  
J. Morfin, SE  
W. Smart

**Admin Support**  
(E. Johnson, Ldr.)  
S. Barrett  
J. Saviano

**DUNE Department**  
J. Raaf, Head, ECA  
(C. Hillgard, Admin Support)

**SBN Department**  
M. Stancari, Head  
(J. Saviano, Admin Support)

**NuMI Department**  
P. Shanahan, Head  
(S. Barrett, Admin Support)

**Technical Support Department**  
B. Norris, Head  
M. Geynisman, Special Projects  
(S. Barrett, Admin Support)

**Cryo Group**  
F. Schwartz, Ldr.  
R. Doubnik  
C.L. James  
M. Zuckerbrot

**Electrical Group**  
L. Bagby, Ldr.  
J. Brown  
J. Harris  
M. Micheli  
T. Nichols

**Mechanical Group**  
M.J. Kim, Ldr.  
M. Dinnon  
S. Hentschel  
S. Kancharla  
D. Pushka  
S. Shetty  
A. Stefanik

**Operations Support Group**  
Z. Pavlovic, Ldr  
W. Badgett  
F. Blaszczyk  
(H. Ferguson, FESS)  
S. Hahn  
C. Joe  
(T.Kobilarcik, AD)  
C. McGivern  
G. Savage  
D. Torretta

**Technician Group**  
K. Hardin, Ldr.  
A. Alfaro  
A. Childress  
R. Davis  
J. Judd  
L. Martinez

**DUNE Management**  
E. James, Ldr.  
F. Cavanna  
M. Hronek, Prog. Supt.  
(R. Rameika)

**DUNE Slow Controls**  
**HV & Cryo**  
A. Hahn, Ldr.  
(F. Blaszczyk)  
S. Lockwitz  
(W. Pellico, AD)  
S. Pordes

**DUNE Simulation & Reconstruction**  
T. Yang, Ldr.  
(A. Himmel, ECA)  
T. Junk  
B. Ramson, RA  
M. Wei (W. Mu), RA  
W. Wu, RA

**DUNE Beam**  
(J. Hylen, AD)  
(N. Mokhov, AD)  
(J. Paley)  
(I. Rakhno, AD)  
(I. Tropin, AS)  
(B. Zwaska, AD)

**DUNE Near Detector**  
A. Bross, Ldr.  
L. Bellantoni  
(M. Crisler, PPD)  
C. David, JA  
A. Ereditato, JA  
D. Harris, JA  
T. Miao  
T. Mohayai, RA  
A. Weber, JA

**DUNE Electronics, APAs & Light Collection**  
A. Marchionni, Ldr.  
(G. Cancelo, SCD)  
D. Christian  
C. Escobar, GS  
S. Mishra  
(A. Para, SCD)  
A. Paudel, RA  
B. Rebel, JA  
(M. Toups)  
M. Verzocchi

**DUNE Computing**  
(P. Ding, SCD)  
(S. Fuess, SCD)  
(M. Kirby, SCD)  
(A. Norman, SCD)

**SBN Project**  
(P. Wilson, Ldr.)  
K. Domann, C  
C. James  
C. Montanari, GS

**SBN RAs**  
S. Balasubramanian, RA  
V. Basque, RA  
(S. Berkman, RA SCD)  
D. Caratelli, RA  
M. Del Tutto, RA, LF  
(S. Gardiner, RA SCD)  
E. Gramellini, RA LF  
B. Howard, RA  
(T. Mohayai, RA)  
F. Psihas, RA  
(M. Wospakrik, RA SCD)  
(W. Wu, RA)  
J. Zettlemyer, RA

**SBN Science**  
O. Palamara, Ldr.  
R. Acciarri  
M. Betancourt, WF  
(G. Cerati, SCD)  
A. Fava  
H. Greenlee  
(W. Ketchum, SCD)  
(M. Kirby, SCD)  
A. Schukraft  
(E. Snider, SCD)  
(T. Strauss, TD)  
M. Toups  
(S. Zeller)  
J. Zennamo, WF

**NOvA**  
(P. Shanahan, Ldr.)  
(P. Adamson, AD)  
(R. Bernstein, PPD)  
(P. Derwent, AD)  
(R. Hatcher, SCD)  
A. Himmel, ECA  
(I. Kourbanis, AD)  
(A. Norman, SCD)  
J. Paley  
L. Suter  
(K. Yonehara, AD)

**NOvA RAs**  
(L. Aliaga, Soplin, RA SCD)  
(W. Mu, RA)  
A. Norrick, RA  
(B. Ramson, RA)  
(A. Wickremasinghe, RA AD)